



*The Way:  
Life is too big to walk it alone.*

 **Friendship**  
United Methodist Church  
Open hearts. Open minds. Open doors.

305 E. Boughton Road  
Bolingbrook, IL 60440

**Worship Service at 10:00am**

**Vision Statement:**

*To Be a faith community that **Loves** God and all creation, **Grows** in the knowledge of God and **Serves** actively because of our faith in God.  
If not us, then WHO?*

630.972.1011 ~ [friendshipchurchumc.org](http://friendshipchurchumc.org)

## Reflections from Pastor Anna

*“Above all, clothe yourselves with love, which binds everything together in perfect harmony. And let the peace of Christ rule in your hearts, to which indeed you were called in the one body. And be thankful. Let the word of Christ dwell in you richly; teach and admonish one another in all wisdom; and with gratitude in your hearts sing psalms, hymns, and spiritual songs to God.”*

*Colossians 3:14-16*

Lately I have joined The Institute of Congregational Development (ICD) that the Northern Illinois Conference offers its clergy. About 25 pastors who serve at the local church meet monthly for two days for the next two years. It has been an overwhelmingly eye-opening experience. Each time I get so excited with many successful stories and practices and would like to apply them all to Friendship. That, I am sure, will not be a good idea, because every ministry needs to be born out of its own context. It means each church needs to make a discernment about: who we are, what we are passionate about, what is important to us. In other words, it is about our vision, mission, and values as followers of Christ on earth.

The premise of such diverse learning for church leaders is that we need to re-think how to be Church because the culture in which we live has changed dramatically. I have discovered, however, that there is one truth that has not changed. That truth is that **“Christianity is a relational faith,”** and we are called into relationship with God through Jesus Christ. For that, we need people to help one another to **learn, love, and lead (3L)** in a healthy relationship. Like any relationship, developing a relationship with God and one another takes time and requires a

willingness to go deeper. Like any relationship it has ups and downs as it reaches maturity.

The truth that I have learned clearly and would like to focus on for the next several years is that growing churches have developed a system to **reach out to** people and help them **get connected** to one another and **formed** as committed followers of Christ. And there will be one more: they have created a system to help people to not just follow but to **lead**. I believe that is what Jesus commanded us to be:

*“You are the light of the world. A city built on a hill cannot be hidden..let your light shine before others, so that they may see your good works and give glory to your Father in heaven.”*  
*(Matthew 5:14-16)*

I have ascertained people come to faith through relationships. Someone in your life took you to church. Someone stands by and walks the journey together in difficult times of life. It is clear that coming to faith is a process, a lifelong process as we stay tuned to the call that God has prepared for us.

Above all, whatever system and strategy we might develop, let us “clothe ourselves with love, abiding in the Word of Christ, and sing songs of praise and thanksgiving to God” who loves all desperately, passionately, and relentlessly and accompanies each step of our journey together.

Much love,

Pastor Anna



YEAR after year at Christmas, you have given me such a wonderful surprise: the Christmas gift of love in cash. It was delivered in a HUGE box which made me laugh with joy and thanksgiving. You melted my heart. Your gift of love made my eyes wet as I opened it on board the early Christmas flight to San Francisco. It was a perfect gift in perfect time for my family re-union in California and Disneyland. I have bragged to my sisters, and their children, and my children how deeply I have been loved by you. Thank you for loving me and my family generously and faithfully! ---- Pastor Anna

## Lenten Events

### Lenten Sermon Series: **The Way**, begins February 10th, Ash Wednesday Worship, 7:30pm

*"I will make a way in the wilderness and rivers in the desert."- Isaiah 43:19*

Lent is a time of reflection and there's nothing like a pilgrimage to conjure that up. Inspired by passages in the scriptures that talk about the journeys, roads and pathways of life, we will make our "way" together through this poignant season.



#### Worship Schedule

Ash Wednesday, February 10, 7:30pm ~ The Way Back  
Sunday, February 14, ~ The Wandering Way  
Sunday, February, 21 ~ The Way Around  
Sunday, February 28 ~ The High Way  
Sunday, March 6 ~ The Way Home  
Sunday, March 13 ~ The Free Way  
Palm Sunday, March 20 ~ The Other Way

*The Way: You Don't Choose a Life, You Live a Life*

### Movie Night: **The Way**, Saturday, February 13, 6:30pm

Sometimes things happen in our lives that cause us to be awakened to a new perspective and we begin to reassess the life road we are following, the direction we are going. The movie "The Way" accompanies us as our modern-day inspiration to live the life we've been given to the fullest.

#### Begin your Lenten journey with "The Way"

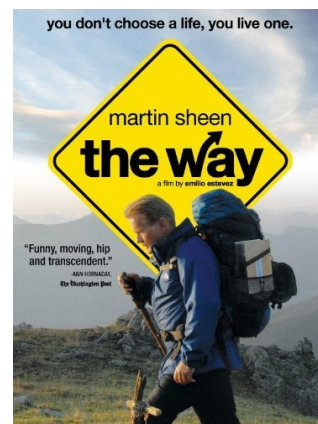
on Saturday, February 13, at 6:30 pm in the sanctuary.

Childcare will be available by Friendship's own youth group.

Donations will be accepted.

Please bring a finger dessert or snack to share for a time of fellowship following the movie.

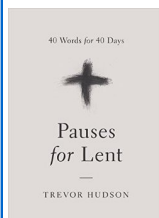
Information is available at the information station.



### Bible Study Opportunities

#### Pauses for Lent—Sundays, February 14-March 27, 9-9:40am

You are invited to make a commitment to pause during each day of Lent. Each day you will focus on **one word, one Bible verse, and a short reflection**. I pray by taking a simple moment of pause and meditation during the season of Lent, you may deepen your relationships with Christ. You may join your friends in faith to share your time-gift of Lent experiences since our faith is personal but not private. Grab a cup of coffee and join us! Book sign up is available at the information station.



#### Bible 101—Wednesdays, February 17-March 23, 6:30-7:15pm

Many people have difficulty understanding the Bible because it seems so complex and intimidating. Join Pastor Anna on Wednesday evenings as she helps you overcome common roadblocks to reading and understanding the Bible. It will also help you understand the authority of the Bible, the main theme of Scripture in Christian life and the various English versions of the Bible. No homework, just bring your curiosity for the Bible!



# Children & Family Ministry News



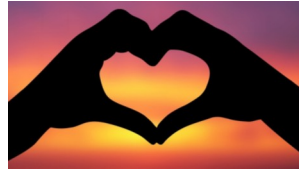
## February 2016

**February 7, 14, 21, 28-10:00am**  
Sunday School

**February 3, 10, 17, 24 ~ 5:30pm**  
Friendship Café

**February 14 ~ Following Worship**  
Hopeful Hearts for Imagine No Malaria

**February 17 ~ 6:30pm**  
Choralier/Alleluia Choir



## Hopeful Hearts for Imagine No Malaria Sunday, February 14

Look for a special Valentine on Sunday, February 14. The Sunday School children will have one for you! Donate generously to our *Imagine No Malaria* Hopeful Hearts collection in the Friendship Center! Every \$10 saves the life of a child from Malaria in Africa!

“Let us love one another, for love comes from God.”  
*1 John 4:7*

## Wednesday Friendship Café 5:30-7:15pm



Friendship Café will continue its midweek ministry throughout the month of February including Ash Wednesday, February 10th, with a simple Lenten meal of soup, bread, salad and dessert. There is no charge for the meal, but donations are greatly appreciated.

## Children’s Sunday School: Deep Blue

### Bible Verse:

“Come, follow me,” he said. (CEB Matthew 4:19)

### Anchor Point:

“Jesus calls us to follow him.”

\*During the month of February, the children will continue to learn about Jesus’ life including how he called his disciples to follow him and tell others of his love.



## Choralier and Alleluia Choirs

The Choralier and Alleluia Choirs will resume rehearsals on February 17th. Rehearsals are from 6:30-7:15pm and will continue through April 20th. The choirs will sing on Palm Sunday and April 24th. Look for more information and schedules on the information station.

The Choralier Choir welcomes children ages 4- through 5th grade while the Alleluia Choir welcomes youth 6th grade and up!

All children and youth are invited to attend! We have lots of music to learn with songs and musical instruments! Hope to see you all there!



## Easter Basket Sales

The Children’s Ministry Team will once again sell Easter Baskets during the month of March. All proceeds will go to our church mission project of *Imagine No Malaria*. We need to raise \$1200 during 2016 to reach our goal of \$5000.

This year we will also take pre-orders for specific age and gender baskets. Look for forms to pre-order at the information station in the hall beginning in February. You will then be assured of just the right basket for your special recipient!

Thank you in advance for your generous support!





Lots of things are happening in Youth Ministry! We meet on Saturday evenings from 7:00-9:00pm. We have worship and all the other fun things that Youth Groups do!

The Foundry (Youth Group) meets Saturdays, 7-9pm with the Youth Group Praise Band, Band for Bread rehearsing at 6:00pm. Invite your friends! Come for a time of worship, praise and of course, youth group games!

If you haven't yet signed into the new **Youth Ministry Tracker App**, see Miss Melissa to do so!!

## February 2016

**February 6, 13, 20, 27~7:00pm**

The Foundry with Band for Bread rehearsals at 6:00pm each night.

**February 6 ~ 10am**

Sub sandwich assembly

**February 7 ~ 5pm**

Super Bowl Party

**February 13 ~ 6:30pm**

Movie Night—The Way



### College Care Packages

The youth will be collecting items to assemble care packages for our college students on February 7th.

Help us bring a smile to our college students' faces and remind them that they are loved.

Requested items: notes of encouragement; granola bars; individual snack packs of crackers, cookies, chips; fruit snacks; candy; gum; money for postage.

If you would like to submit a college student to receive a care package, please contact Mr. Tom or Miss Melissa.



### Career Choices for High School Students

**Sunday,  
February 21,  
11:15am-1:00pm**

Join us on the third Sunday of each month as we continue our workshops for college essays and scholarship applications. Bring your laptop and something to take notes!

Coming up in March: Illinois Regional College Fair at North Central College.

Watch for more details and for carpool information.

Questions? Contact Amania Drane:  
niaenterprises1@comcast.net



Follow us on Twitter  
Find us on Facebook!



## Community Outreach Committee



The Community Outreach Team has developed the motto, "Service is a precious commodity, both to the giver as well as the recipient. IF NOT US, THEN WHO? And we can give them Christ, too!" We have spent the last four months reaching out to community organizations to build relationships and understand community issues/opportunities from their perspective; and seeking ways to help our congregation get more involved. We discovered that many of our members are already doing a lot. In fact, about 75% of our families are involved with some type of ministry or service here at Friendship. Many of those ministries or programs take place inside these walls. Also, we've looked at what our members are doing in outreach outside our four walls. Our numbers reflect that more than 40% of our families are involved in some area of Community Outreach! That's great news and our fervent hope is that in 2016 we are able to energize a greater number of our congregation to embrace our motto and serve externally in the community with joyful and giving hearts.

Thank you to those of you who attended our January 24 Community Outreach Worship Service and Community Outreach Fair including Tom Ross, Bolingbrook Public Safety Director; Ken Teppel, Deputy Police Chief; Jerry Basel, POWER Connection Executive Director; and Carie Johnstone, Valley View School District Assistant Executive Director of Social Services. We encouraged all families of our congregation to complete a Community Outreach survey.

If you have not completed a survey yet, please do so. You can pick up a survey at the church office or by asking an usher on Sunday morning. We will provide an update on our survey results and opportunities for volunteering in the near future.

Our short term goals are to increase the congregation's awareness of existing outreach ministries, identify external volunteer opportunities and champion congregation participation. To that end, in addition to continuing to support our current ministries and helping them continue to flourish, we are asking the congregation to prayerfully consider participation in three new opportunities:

- Career Choices for High School Students will be partnering with the Valley View School District to develop a mentoring program for a small group of high school students who need our prayerful support and guidance.
- POWER Connection, a local faith based, not-for-profit organization, that supports a food pantry, resale shop and job training.
- The new Caregiver Ministry which will be led by Mary Steinwandt. In addition, Mary will work with current members to enhance and coordinate opportunities in supporting services and engagement of our Senior Services Ministry.

Should you have any questions or suggestions for the Community Outreach Ministry Team, we encourage you to contact our leadership team: Carolyn Jones, Amania Drane or Gene Paquette.

Thank you for your prayerful support and participation.

## For Sale~ A Bit of Friendship History!

If you have been a member of Friendship Church for more than a decade, you might remember a beautiful hand-made quilt that used to hang over the Chancel Choir area. This quilt was purchased by Pastor Jamie Hanna Williams in a kit form and lovingly pieced and quilted by former member Doris Havens.

The quilt is brightly colored, using batik-like fabrics with a contrasting border, as well as a floral backing. The quilt pattern is a cross, though many who have seen the quilt feel that it does not immediately strike one as a religious piece.

The piece measures 81 inches by 94 inches and is 100% cotton. Although the quilt would look lovely on a bed, it also can be hung on a wall. A sleeve has been sewn on the back for that purpose.

Since this piece is so attractive, we feel that it should be displayed, used and not sitting in a closet! The Worship Committee would like to offer it first to a member or friend of Friendship Church. The quilting was done for free, but if you are familiar with quilting, that is the most expensive part of completing a quilt.

If you are interested in seeing the quilt in person or making an offer, please call the church office at (630) 972-1011 and we will arrange an appointment. The quilt will also be featured on our new church Facebook page, so don't delay if you are interested in owning this lovely piece of art!



**Image of Friendship's quilt**



**Close up of quilt**

**View of backing fabric**



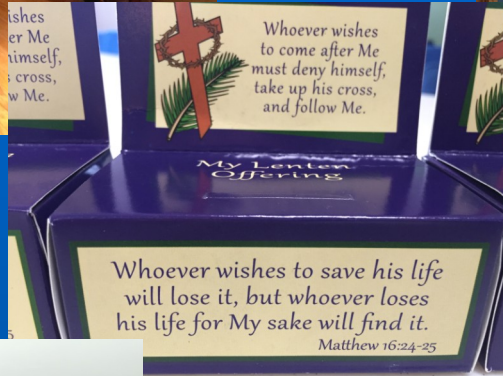
**Close up of square**



## Around and About Friendship Church



Congratulations to Amanita Drane on being awarded a grant from the United Methodist Foundation of the Northern Illinois Conference. She was accompanied by Olamide Olatunde and Robin Lichty as she accepted the grant at the Chicago Temple in early January.



Lent preparations have begun! Thanks to Muffy Paquette, Sandy Kozlowski, Carolyn Larsen, Carolyn Weber, and Jane Pierce for folding all the offering boxes!



Thank you to the Worship Design Team of Muffy Paquette and Vicki Karns for their wonderful displays which have helped enhance our worship experience!



Members of the Music Department were invited to the Pierce home for a celebration following the Holiday Services. Thanks to all who made the Holiday Season a wonderful, **MUSICAL**, experience!





## First Friends Preschool



M is for Marble! The children have been fascinated with marble activities lately, including marble race games and marble painting. The traditional marble game is popular every single day and now we have added a magnetic toy on the chalkboard that can be configured in so many different ways. These activities promote learning about physics concepts like gravity, and practice in engineering, that is: problem solving. Socially, the children learn to share and take turns, and work out solutions together. At the Art table, marble painting is fun and challenging, trying to get the marble to roll the way you want it to go. What else can we do with marbles? I need to add some new challenges!

## Friendship Community

### Prayer Chain:

Please email your requests to [prayerrequests@friendshipchurchumc.org](mailto:prayerrequests@friendshipchurchumc.org). If you don't use email please call the church office and the request will be forwarded. If you do not have access to a computer and wish to join the prayer chain, please advise the church office or see Kathryn Bulman, prayer chain coordinator. Please be mindful that even though prayer requests may be common knowledge, it is our responsibility to maintain confidentiality.

### Celebration offerings



The tradition of the Celebration Offering came to us from our African Fellowship.

On the first Sunday of each month as we celebrate God's abundant gifts on our lives, a special offering is taken in addition to the general offering.

It's a chance to celebrate the blessings God has bestowed upon our lives. Look for the special offering envelope in the bulletin. There is a place to mark if you would like to share your story with the congregation during a Sunday worship.

We have been blessed continuously with generous sharing and giving from our church families to share their moments of thanksgiving and joy with others who need an extra encouragement.

We are grateful that we have received 10 envelopes for the celebration offering for the first month of 2016, totaled \$131.00. They are for thanksgiving for the life of family and God's faithfulness; God's grace in our lives; Emmanuel and all that God has provided.

May God continue to bless you richly as your compassionate heart grows daily!

Blessings, Anna

### DAYBREAK

Serving at **Daybreak** is a long standing tradition at Friendship. On the third Friday (and following Saturday morning) we donate food, cook and serve two meals. Watch inserts in 2nd Sunday bulletins for details on how to donate and get involved in serving at the shelter.

*Dinner on Friday, February 19 @ 5:30 pm*  
*Breakfast Saturday, February 20 @ 5:00 am*  
Richard Guzman, Coordinator

### SENIOR BIBLE STUDY & LUNCHEON

Is open to all senior adults. It meets on the 3rd Thursday of each month at 11:15am. The study is led by Pastor Anna and is followed by a delicious luncheon. If you would like to attend, contact the church office at 630-972-1011.

*Study & Lunch: Thursday, February 18 @ 11:15 am*

### AA & GA

Friendship is a place of help and hope for those struggling with addictions. Meetings are open to all.  
**AA Meetings:** Saturdays @ 9am & Sunday @ 5pm  
**GA Meetings:** Fridays @ 7:30 pm

### ANXIETY/PANIC ATTACK SUPPORT GROUP

Meets the 2nd & 4th Thursdays of the month from 7—9pm. Open to all.

### STUDY CLUB

Wednesdays 4-5pm (During the school year)  
Mentoring students from WoodView School.

### DONATIONS FOR LOCAL FOOD PANTRIES:

**7th Day Adventist Pantry**  
**POWER Connection**  
1st Sunday of every month

### FIRST FRIENDS CHRISTIAN PRESCHOOL MONDAY-FRIDAY

**9:00-11:30AM**

Contact Chris Bosacki, Director,  
for more information.  
[chrisbosacki@firstfriendspreschool.info](mailto:chrisbosacki@firstfriendspreschool.info)

# February 2016 ~ Friendship Church

Sun	Mon	Tue	Wed	Thu	Fri	Sat
	<b>1</b> 5:30pm Girl Scouts	<b>2</b> 10am BPC Ministry  7pm Staff Parish 7pm Crop Walk Mtg.	<b>3</b> 10:30am Women's Bible Study 4pm Study Club 4:45pm Confirmation 5:30pm Café 6:30pm Scouts, Bells 7:30pm Chancel Choir	<b>4</b>  6:30pm Covenant Bible Study	<b>5</b> 10am BPC Ministry  6:30pm Daisy Scouts 7:30pm GA	<b>6</b> 9am AA  7pm The Foundry
<b>7</b> 10am Worship & Sunday School  5pm AA	<b>8</b>  5:30pm Girl Scouts	<b>9</b> 10am BPC Ministry 10:30am Worship Planning	<b>10</b> 10:30am Women's Bible Study 4pm Study Club 4:45pm Confirmation 5:30pm Café 7:30pm Ash Wednesday Worship	<b>11</b>  6:30pm Covenant Bible Study 7pm Anxiety Support	<b>12</b> 10am BPC Ministry  7:30pm GA	<b>13</b> 9am AA  6:30pm "The Way" Movie night
<b>14</b> 1st Sunday in Lent Boy Scout Sunday 10am Worship & Sunday School 5pm AA 5pm Gujarati Worship	<b>15</b> President's Day No School	<b>16</b> 10am BPC Ministry  7pm Church Council	<b>17</b> 10:30am Women's Bible Study 4pm Study Club 4:45pm Confirmation 5:30pm Café 6:30pm Scouts, Bells 7:30pm Chancel Choir	<b>18</b> 11:15am Sr. Lunch and Bible Study  6:30pm Covenant Bible Study	<b>19</b> 10am BPC Ministry  5:30pm Daybreak 6:30pm Daisy Scouts 7:30pm GA	<b>20</b> 5am Daybreak 9am AA  7pm Women's Fellowship Oscar Night 7pm The Foundry
<b>21</b> 2nd Sunday in Lent 10am Worship & Sunday School 1pm Adult Education Mtg 5pm AA	<b>22</b>  5:30pm Girl Scouts	<b>23</b> 10am BPC Ministry  7pm Scout Committee	<b>24</b> 10:30am Women's Bible Study 4pm Study Club 4:45pm Confirmation 5:30pm Café 6:30pm Scouts, Bells 7:30pm Chancel Choir	<b>25</b>  6:30pm Covenant Bible Study	<b>26</b> 10am BPC Ministry  7:30pm GA	<b>27</b> 9am AA  7pm The Foundry
<b>28</b> 3rd Sunday in Lent 10am Worship & Sunday School 11:15am Youth Mission Trip Info Meeting 5pm AA	<b>29</b> Prayer Vigil for General Conference					